



**FOR SALE**

**Pondwood Office Park**  
4969 Olson Memorial Highway  
Golden Valley, Minnesota 55422

## Property Features

Quiet office property, situated on a serene pond just minutes west of downtown Minneapolis and conveniently located just east of Hwy 100.

Great owner user opportunity for sale.

Building Sq. Ft. : 4,600

- Owner User Opportunity
- Serene pond views throughout
- Convenient location at Hwy 55 and Hwy 100

## Contact

**Joe Smith**

Tel 952-475-5122

E-mail: [jsmith@steinerocr.com](mailto:jsmith@steinerocr.com)

# For Sale

## Pondwood Office Park

4969 Olson Memorial Highway  
Golden Valley, Minnesota 55422

### Details

Office Sq. Ft. : 4,600

Warehouse Sq. Ft. : 0

Clear Height :

Office Rate : \$150.00

Warehouse Rate : \$0.00

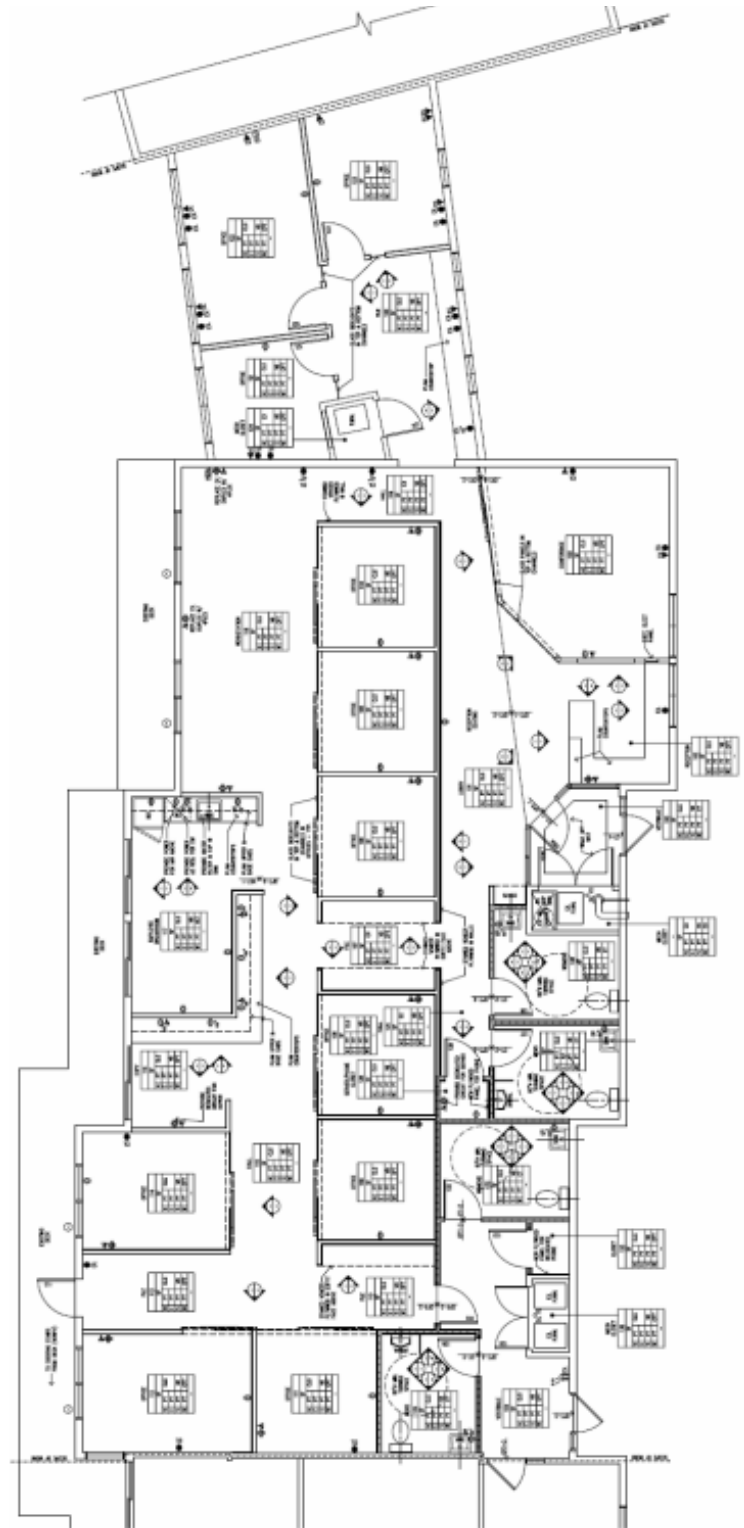
Tax & Cam (est.): \$0.00

### Features

Abundant Natural Light

Deck across the entire back of the  
building

Great space for many different uses



The information herein was obtained from sources believed to be reliable; however, Steiner Development makes no guarantees, warranties, or representations as to the completeness or accuracy thereof. The presentation of this property is submitted subject to errors, omissions, change of price or conditions prior to sale or lease, or withdrawal without notice.

[www.steinerdevelopment.com](http://www.steinerdevelopment.com)

3610 County Road 101 | Wayzata, MN 55391  
Tel (952) 473-5650 | Fax (952) 473-7058

**Steiner**  
Commercial Realty, Inc.