

**FOR LEASE**

**Encore Park II B**  
11545-11581 Encore Circle  
Minnetonka, MN 55343

## Property Features

Building Sq. Ft. : 52,000

- Convenient to Hopkins services
- 3-phase power
- Truck height docks, drive-ins
- On bus line

## Contact

**Joe Smith**

Tel 952-475-5122

E-mail: [jsmith@steinerocr.com](mailto:jsmith@steinerocr.com)

# For Lease

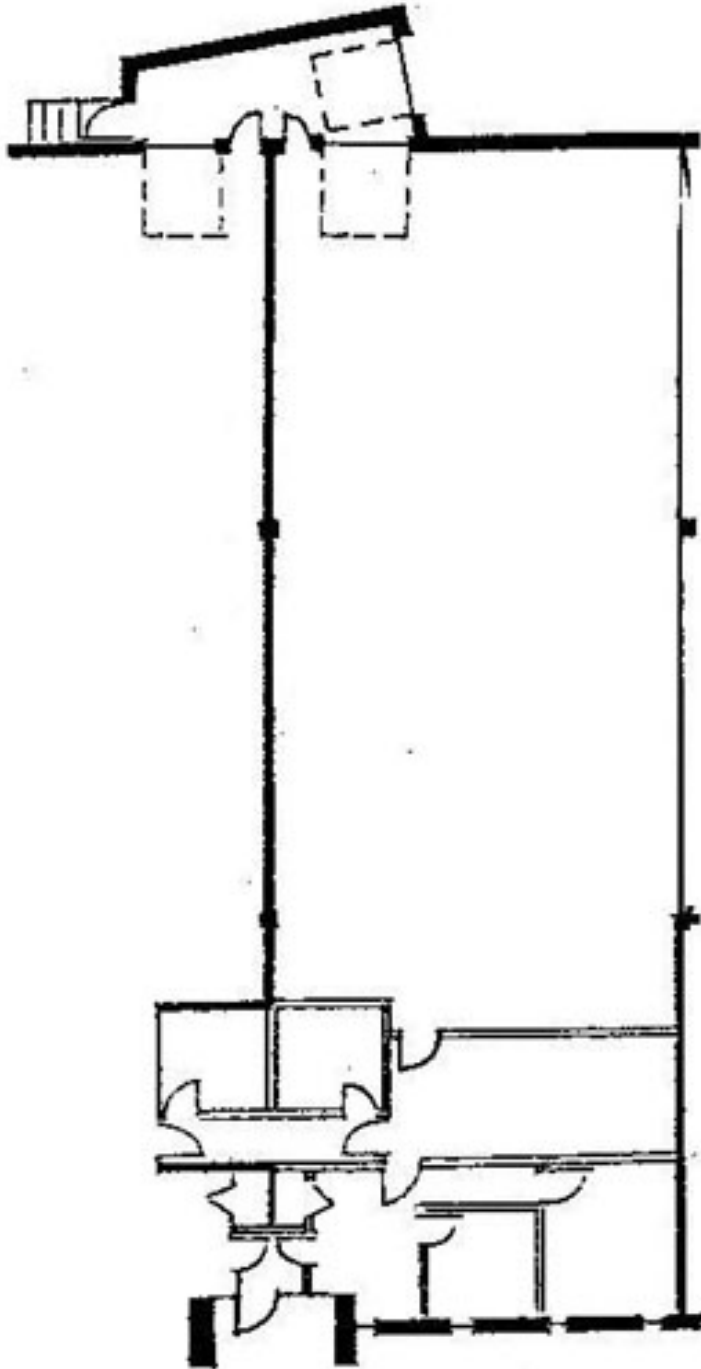
**Encore Park II B**  
11573 Encore Circle  
Minnetonka, MN 55343

## Details

Office Sq. Ft. : 800  
Warehouse Sq. Ft. : 4,020  
Loading : dh  
Clear Height : 12  
Office Rate : \$8.50  
Warehouse Rate : \$4.50  
Tax & Cam (est.): \$2.87

## Features

Truck Height dock  
Quiet Cul-de-sac location



The information herein was obtained from sources believed to be reliable; however, Steiner Development makes no guarantees, warranties, or representations as to the completeness or accuracy thereof. The presentation of this property is submitted subject to errors, omissions, change of price or conditions prior to sale or lease, or withdrawal without notice.

[www.steinerdevelopment.com](http://www.steinerdevelopment.com)

3610 County Road 101 | Wayzata, MN 55391  
Tel (952) 473-5650 | Fax (952) 473-7058

**Steiner**   
Commercial Realty, Inc.