



**FOR LEASE**

**Fridley Business Center I**  
251-281 Commerce Circle S  
Fridley, MN 55432

### Property Features

---

Property is centrally located in Fridley off of University Avenue and provides for great access.

Building Sq. Ft. : 26,560

- 3 Phase Power

### Contact

---

**Joe Smith**

Tel 952-475-5122

E-mail: [jsmith@steiner-cr.com](mailto:jsmith@steiner-cr.com)



# For Lease

## Fridley Business Center I

271 Commerce Cir S  
Fridley, MN 55432

### Details

Office Sq. Ft. : 0

Warehouse Sq. Ft. : 9,030

Loading : DI (2)

Clear Height : 14

Office Rate : \$8.50

Warehouse Rate : \$4.50

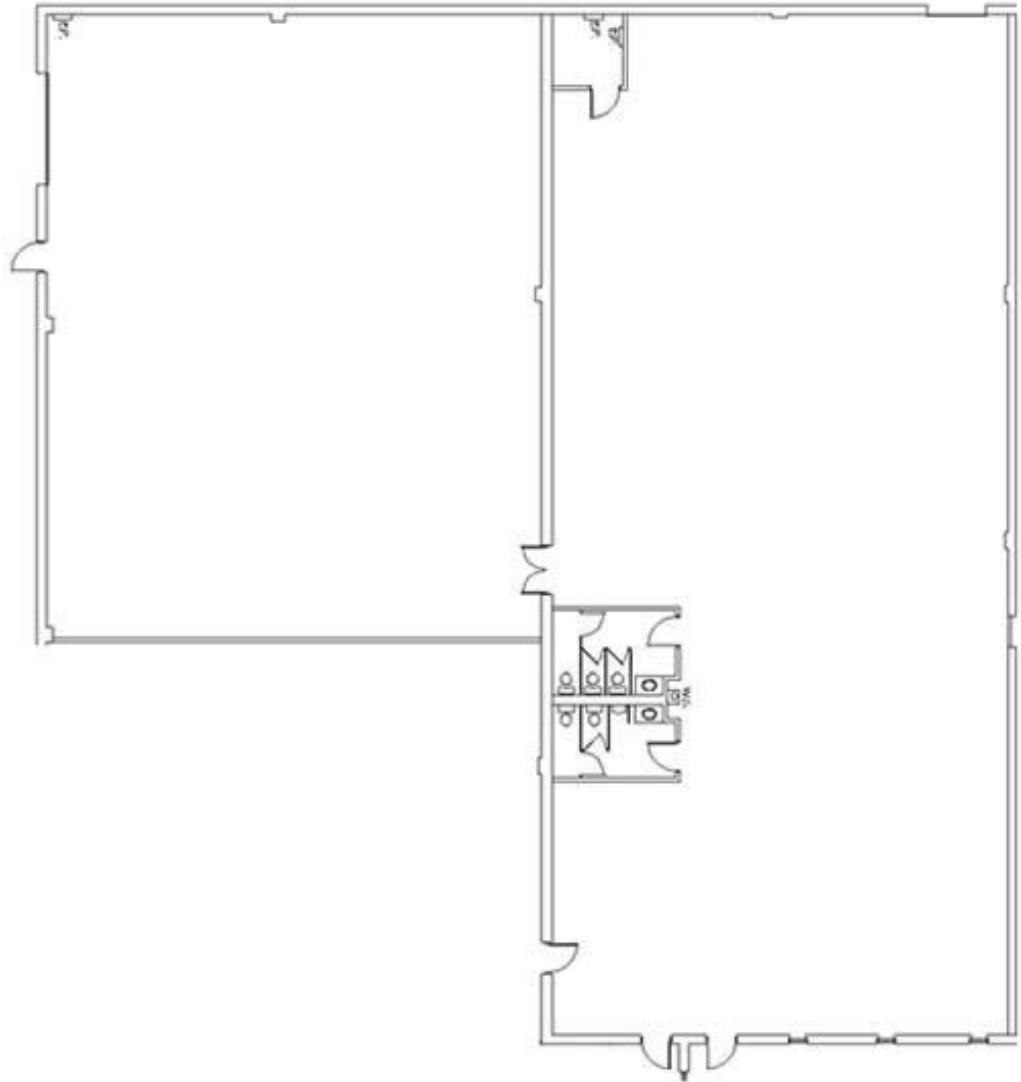
Tax & Cam (est.): \$2.66

### Features

Heavy power.

Office BTS

Drive-In Door



The information herein was obtained from sources believed to be reliable; however, Steiner Development makes no guarantees, warranties, or representations as to the completeness or accuracy thereof. The presentation of this property is submitted subject to errors, omissions, change of price or conditions prior to sale or lease, or withdrawal without notice.

[www.steinerdevelopment.com](http://www.steinerdevelopment.com)

3610 County Road 101 | Wayzata, MN 55391  
Tel (952) 473-5650 | Fax (952) 473-7058

**Steiner**  
Commercial Realty, Inc.