



**FOR SUB LEASE**

**Golden Valley III**  
8800-8840 Seventh Ave. N  
Golden Valley, MN 55427

### Property Features

Multi-tenant office / warehouse building near the heart of Golden Valley. Quick access to I394 and Highways 55 and 169.

Building Sq. Ft. : 59,978

- 3-phase power
- Convenient to many services

### Contact

**Joe Smith**  
Tel 952-475-5122  
E-mail: [jsmith@steiner-cr.com](mailto:jsmith@steiner-cr.com)

# For Sub Lease

## Golden Valley III

8804-8806 7th Ave N  
Golden Valley, MN 55427

### Details

Office Sq. Ft. : 3,135

Warehouse Sq. Ft. : 6,146

Loading : DH 2

Clear Height : 18

Office Rate : \$8.50

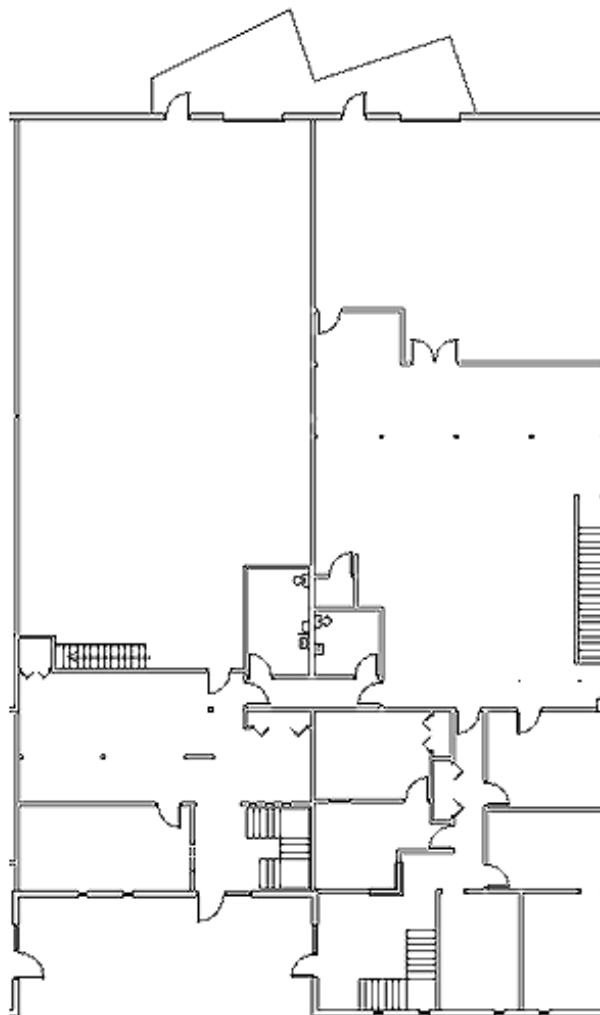
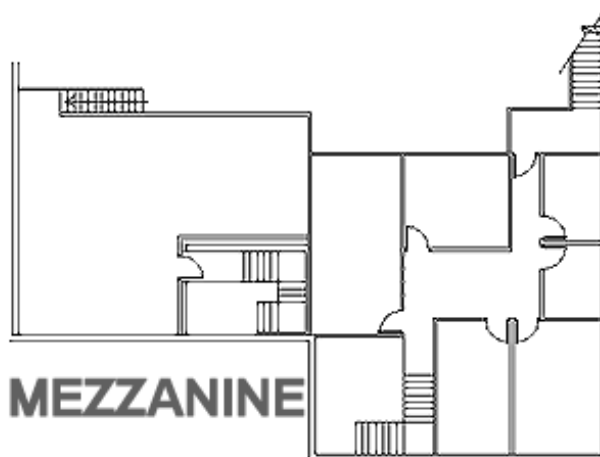
Warehouse Rate : \$4.50

Tax & Cam (est.): \$3.10

### Features

Sublease through 12-31-18

End-cap space



The information herein was obtained from sources believed to be reliable; however, Steiner Development makes no guarantees, warranties, or representations as to the completeness or accuracy thereof. The presentation of this property is submitted subject to errors, omissions, change of price or conditions prior to sale or lease, or withdrawal without notice.

[www.steinerdevelopment.com](http://www.steinerdevelopment.com)

3610 County Road 101 | Wayzata, MN 55391  
Tel (952) 473-5650 | Fax (952) 473-7058

**Steiner**  
Commercial Realty, Inc.