

FOR LEASE

Maplewood II B

1636 Gervais Ave. E, Suites 1-15
Maplewood, MN 55109

Property Features

Quick access to 694 and 35E with outstanding visibility from Highway 36.

Building Sq. Ft. : 53,807

- Highway 36 Visibility
- Docks and Drive-ins
- 3-phase power
- All office potential

Contact

Joe Smith

Tel 952-475-5122

E-mail: jsmith@steiner-cr.com

For Lease

Maplewood II B

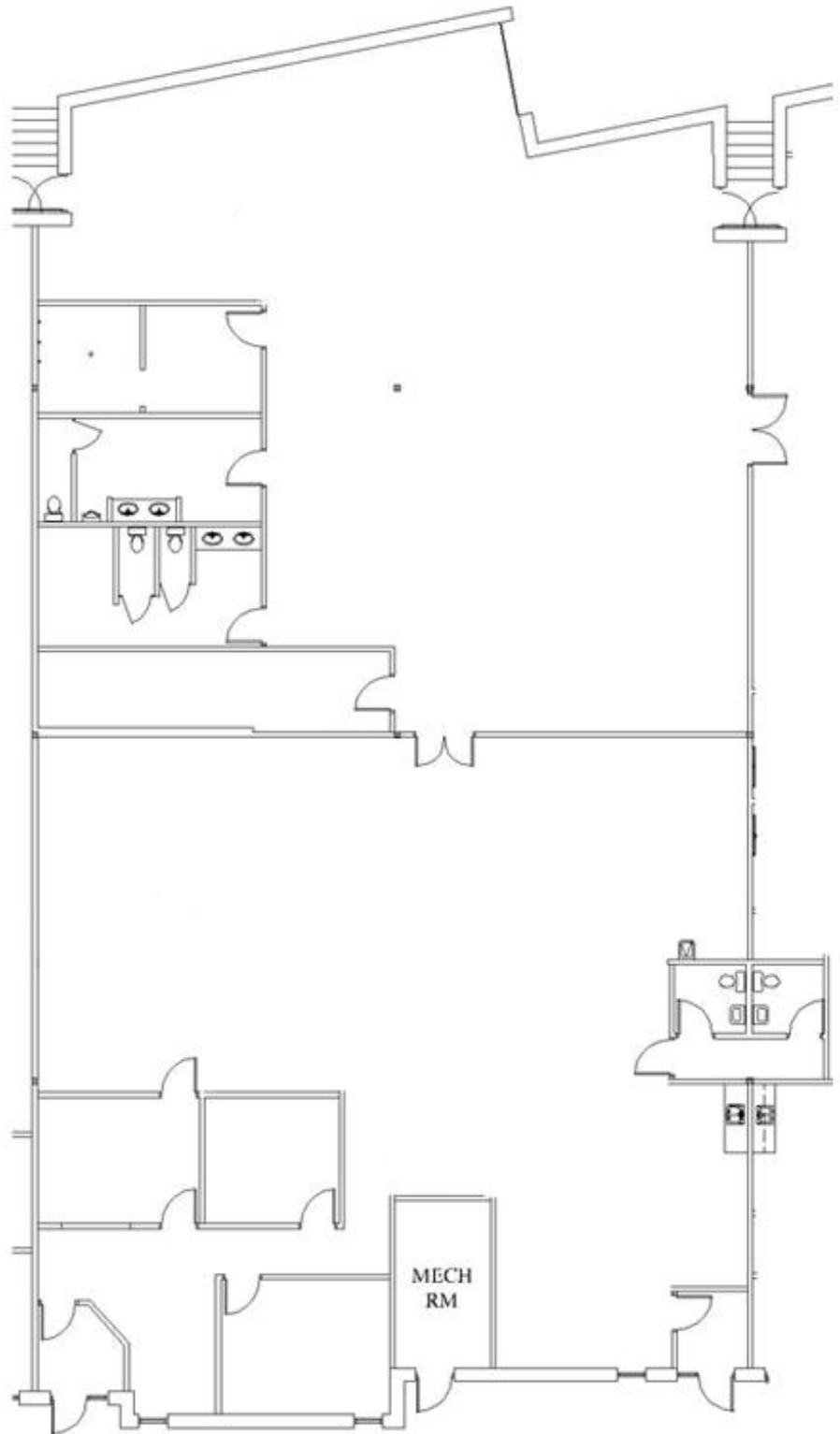
1636 Gervais Ave. Suites 11-12
Maplewood, MN 55109

Details

Office Sq. Ft. : 3,500
Warehouse Sq. Ft. : 3,526
Loading : DH
Clear Height : 14
Office Rate : \$8.75
Warehouse Rate : \$4.50
Tax & Cam (est.): \$3.07

Features

100% A/C
Reconfigure Office to suit
Dock Door
Hwy 36 Exposure



The information herein was obtained from sources believed to be reliable; however, Steiner Development makes no guarantees, warranties, or representations as to the completeness or accuracy thereof. The presentation of this property is submitted subject to errors, omissions, change of price or conditions prior to sale or lease, or withdrawal without notice.

www.steinerdevelopment.com

3610 County Road 101 | Wayzata, MN 55391
Tel (952) 473-5650 | Fax (952) 473-7058

Steiner
Commercial Realty, Inc.